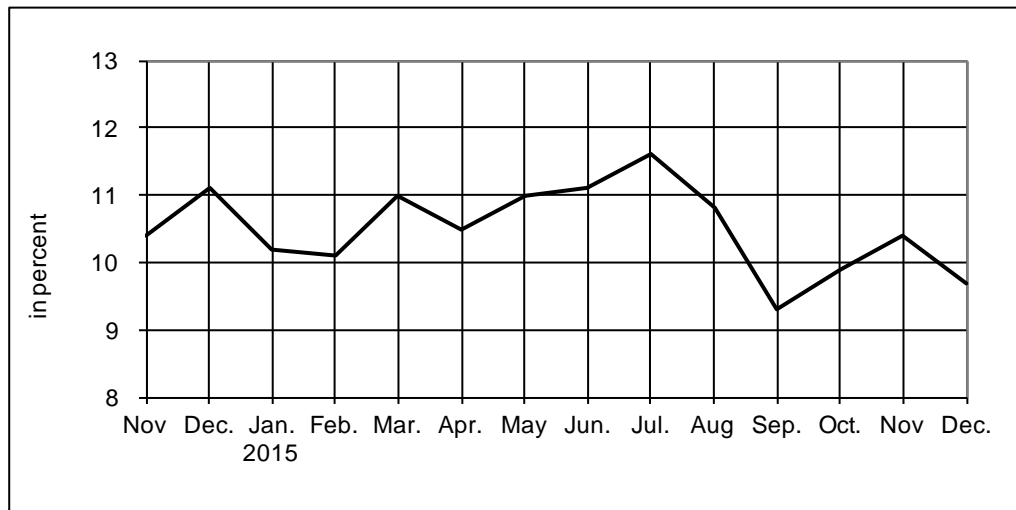


January 8, 2016

PEI UNEMPLOYMENT RATE, DECEMBER 2015 (Seasonally adjusted)



DECEMBER UNEMPLOYMENT RATE BY PROVINCE (seasonally adjusted, in percentages)

Month	Can	NL	PE	NS	NB	QC	ON	MB	SK	AB	BC
December 2015	7.1	14.4	9.7	8.6	8.9	7.8	6.7	5.9	5.5	7.0	6.7
November 2015	7.1	13.0	10.4	8.6	8.7	7.5	6.9	6.1	5.5	7.0	6.2
December 2014	6.7	11.8	11.1	8.4	10.0	7.5	7.0	5.4	3.7	4.7	5.5
Annual change (pp)	0.4	2.6	-1.4	0.2	-1.1	0.3	-0.3	0.5	1.8	2.3	1.2
Monthly change (pp)	0.0	1.4	-0.7	0.0	0.2	0.3	-0.2	-0.2	0.0	0.0	0.5

SUMMARY

Today's Statistics Canada *Labour Force Survey* shows that P.E.I.'s seasonally adjusted unemployment rate was 9.7 per cent in December 2015. This is down 0.7 percentage points from last month and down 1.4 percentage points from December 2014. Seasonally adjusted employment in December totaled 72,900, a decrease of 200 jobs from one year ago and down by 600 from November 2015. The annual decrease was a result of a decrease of 1,200 full-time jobs while part-time employment increased by 1,000. The number of unemployed persons on Prince Edward Island decreased to 7,800, down by 700 from one month ago and down 1,300 from December 2014. The labour force participation rate stood at 66.6 in December, down 1.5 percentage points from December 2014. The total labour force decreased by 1,500 from December 2014 to total 80,700.

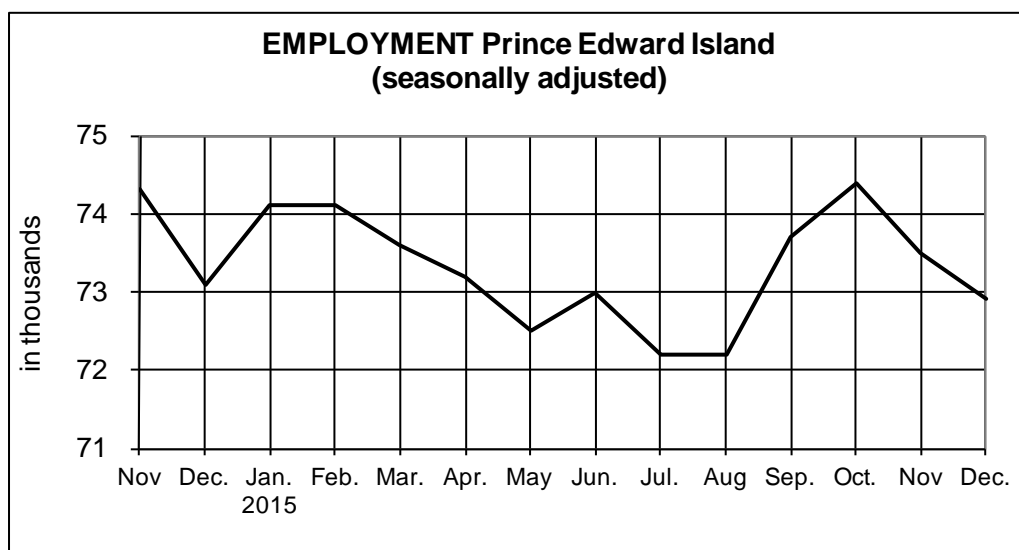
The three-month moving average unemployment rate used by the Employment Insurance program for the Charlottetown region decreased to 7.4 per cent in December, down from 7.5 per cent in November. The rate in the PEI region in December was 12.9 per cent, up by 0.4 percentage points from November 2015.

Nationally, employment increased slightly by 23,000 and the unemployment rate remained at 7.1 per cent, unchanged from November 2015. Notable employment increases occurred in Ontario while employment declined in Saskatchewan, Nova Scotia, Newfoundland and Labrador, and Prince Edward Island.

Employment gains (+)/ losses (-) between December 2014 and December 2015 occurred in the following sectors on Prince Edward Island:

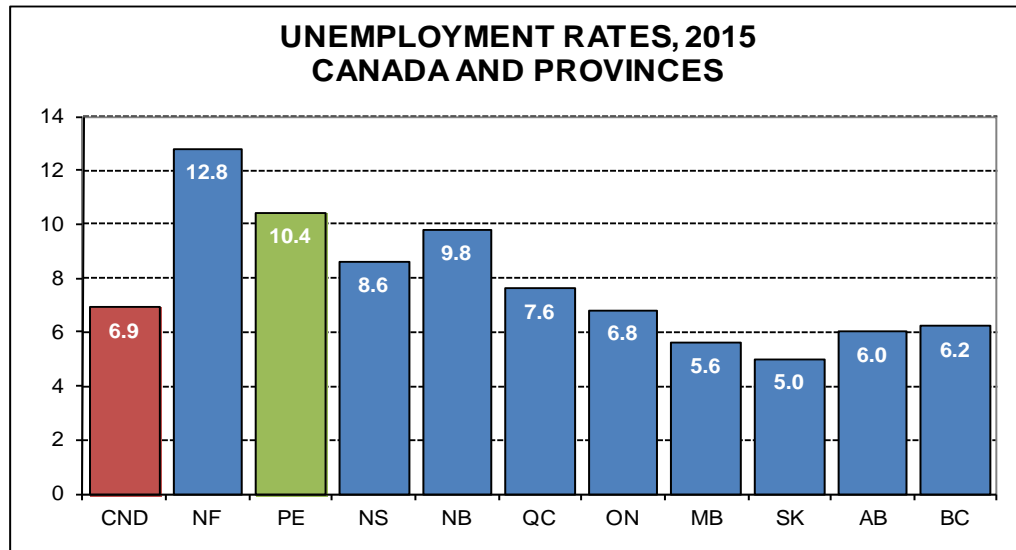
Goods-producing sector:	-400	Service-providing sector:	+200
Agriculture:	+100	Trade (Retail/Wholesale):	-200
Other Primary Industries:	+100	Transport & Warehousing:	-700
Manufacturing:	-100	Finance, Insurance, Real Estate:	+500
Construction:	-700	Business Services:	-200
Utilities:	0	Professional, Scientific and Technical:	+400
		Educational Services:	+200
		Health & Social Services:	-300
		Public Administration:	-300
		Information, Culture and Recreation:	-200
		Accommodation & Food services:	+1,100
		Other Services:	-200

(Components may not sum to total due to rounding)



2015 LABOUR FORCE SUMMARY

Annual Labour Force survey data released by Statistics Canada on January 8, 2015 showed that the annual unemployment rate for Prince Edward Island fell from 10.6 per cent in 2014 to 10.4 per cent in 2015. As the diagram below illustrates, P.E.I.'s unemployment rate remains the second highest in the country. The number of unemployed declined by 3.4 per cent to 8,500 in 2015, down from 8,800 in 2014.



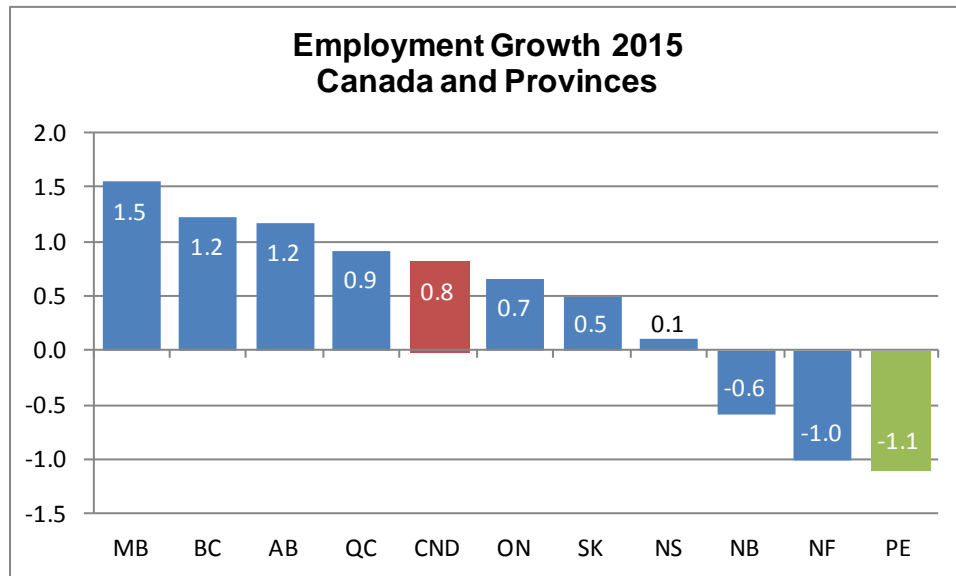
In 2015 there were on average 73,200 persons employed on P.E.I., a decrease of 800 persons or 1.1 per cent over 2014. The largest gains were seen in Accommodation and Food Services (500 jobs), Public Administration (400 jobs) and Manufacturing (400 jobs), while the largest declines occurred in Construction (-600 jobs), Health Care and Social Assistance (-600 jobs), and Agriculture (-500 jobs).

Annual employment gains (+)/ losses (-) for PEI between 2014 and 2015 occurred in the following sectors:

Goods-producing sector:	-800	Service-providing sector:	-200
Agriculture:	-500	Trade (Retail/Wholesale):	0
Other Primary Industries:	-100	Transport & Warehousing:	-400
Manufacturing:	+400	Finance, Insurance, Real Estate:	+200
Construction:	-600	Business Services:	+200
Utilities:	+100	Professional, Scientific and Technical:	+200
		Educational Services:	-300
		Health & Social Services:	-600
		Public Administration:	+400
		Information, Culture and Recreation:	-200
		Accommodation & Food services:	+500
		Other Services:	+100

(Components may not sum to total due to rounding)

Nationally, employment increased by 0.8 per cent. The diagram below shows employment growth for Canada and the provinces.



The following table shows 2015 labour force information for Canada and the provinces.

Annual Average	Can	NL	PE	NS	NB	QC	ON	MB	SK	AB	BC
Unemployment Rate	6.9	12.8	10.4	8.6	9.8	7.6	6.8	5.6	5.0	6.0	6.2
Unemployment (000's)	1,331.4	34.7	8.5	42.0	38.4	337.2	502.9	37.9	30.4	148.0	151.4
Employment (000's)	17,946.6	236.2	73.2	448.1	351.8	4,097.0	6,923.2	636.2	573.7	2,301.1	2,306.2
Labour Force(000's)	19,278	270.8	81.7	490.2	390.2	4,434.2	7,426.1	674.1	604.1	2,449.2	2,457.6
Participation Rate	65.8	61.1	67.6	62.4	62.7	64.8	65.2	68.3	70.1	73.0	63.4