

2/17/2016

*emd 17.02.16  
Standing Committee  
on Health + Wellness*

**Health PEI**  
One Island Health System

# Mental Health and Addiction Services

Standing Committee on  
Health and Wellness  
February 17, 2016  
Dr Richard Wedge  
Verna Ryan

## Standing Committee on Health and Wellness

- Purpose of presentation:
  - Brief overview of Mental Health and Addictions-framework and tiers
  - HPEI Work underway
  - Update on Initiatives related to the Mental Health and Addictions Strategy

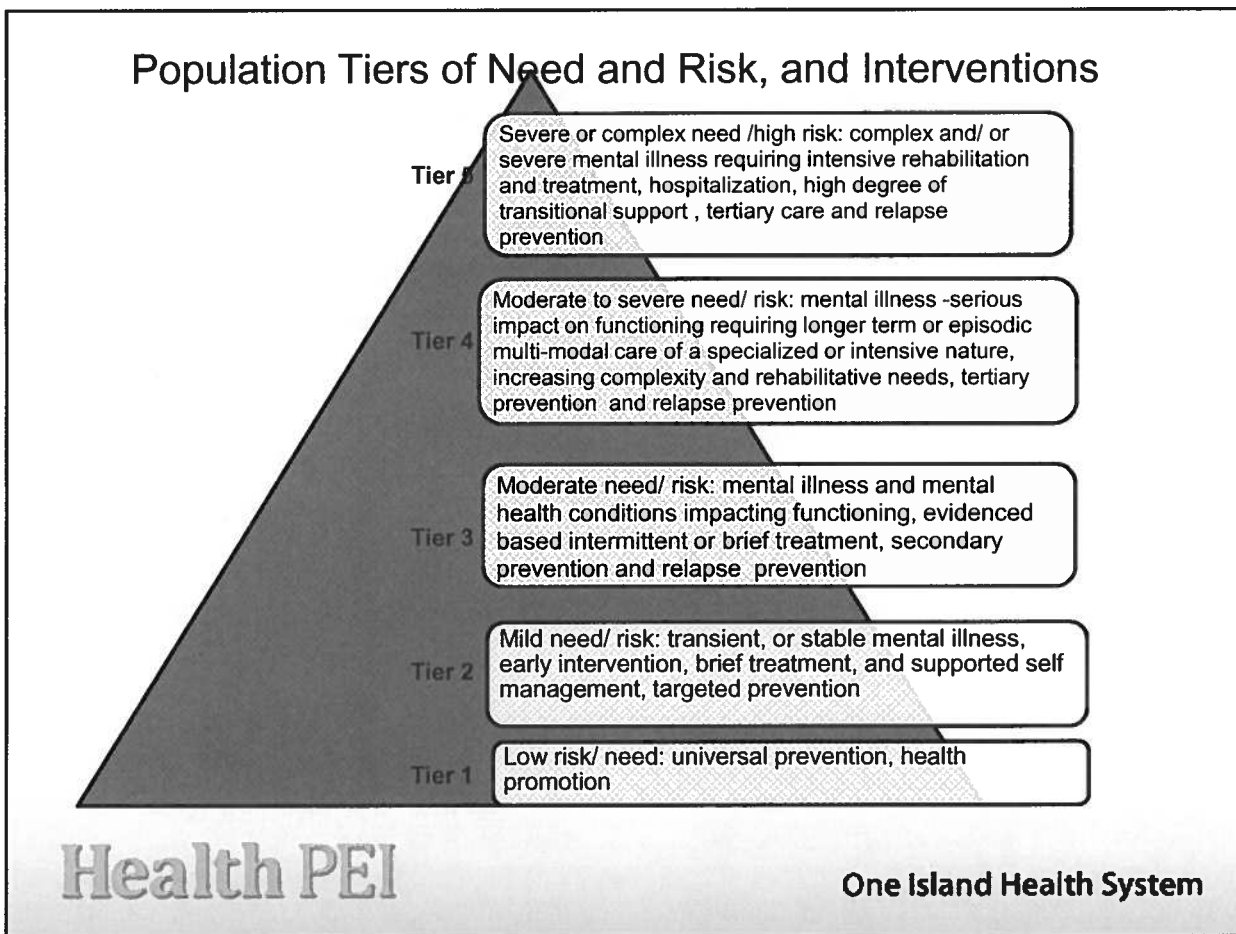
## Profile of Division

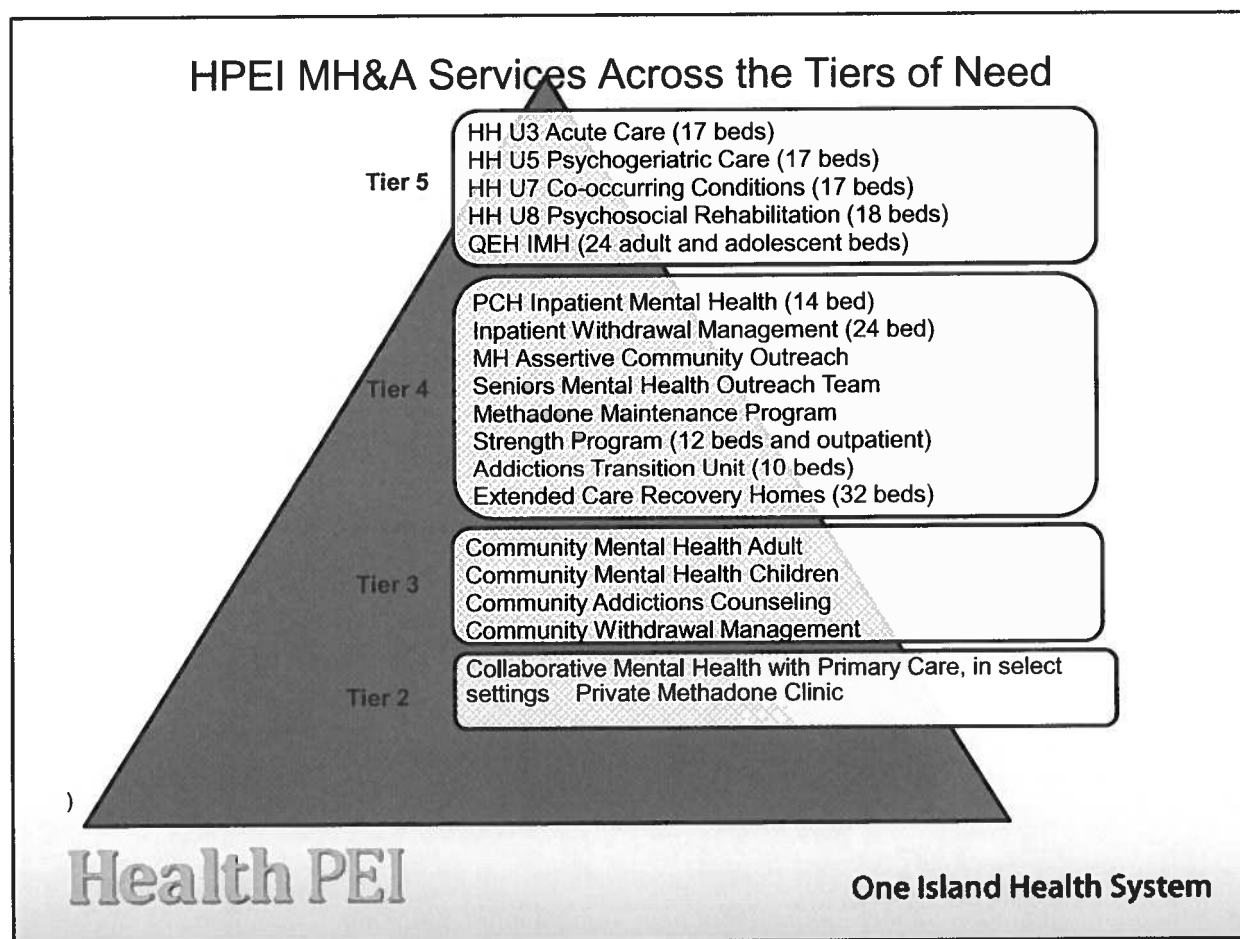
### Acute Mental Health

- Hillsborough Hospital
- In-Patient Unit PCH
- Unit 9 QEH
- Crisis Response
- Community Mental Health
  - Western Hospital
  - O'Leary Health Center
  - Prince County Hospital
  - Chtown (McGill/Richmond)
  - Douses road, Montague
  - Souris Hospital Annex
  - Primary Care Collaboration
- Addiction Programs
  - Provincial Addictions Treatment Facility (PATF)
  - Methadone Maintenance
  - Extended Care Recovery Homes
  - Strength Program
- Community Addiction Services
  - Western Hospital
  - O'Leary Health Center
  - PATF
  - Prince County Hospital
  - Douses Road Montague
  - Souris Hospital Annex

Health PEI

One Island Health System





## Utilization Data

### MH&A Inpatient Services

	2014-15	Admissions	Admissions/Month	Occupancy Rate (%)
HH U3: Acute		129	10.8	95.1%
HH U5: Psychogeriatric		5	0.4	91.9%
HH U7: Co-occurring		2	0.17	93.3%
HH U8: Rehab		30	2.5	91.9%
QEH IMH Adult		331	27.6	91.5%
QEH IMH Adolescent		45	3.8	92.5%
PCH IMH		329	27.4	103%
Bed-Based Withdrawal		978	81.5	na

80% is recommended occupancy rate by UK psychiatric ward standard

### MH&A Community-Based Services

	2014-15	Referrals
Community Mental Health Adult		4591
Community Mental Health Children		1248
Outpatient Addictions Programs		2739
Addictions Extended Care		Transition from other programs

**Health PEI**

**One Island Health System**

## CMH Wait Times, Urgent and Semi-Urgent

---

### Service Request

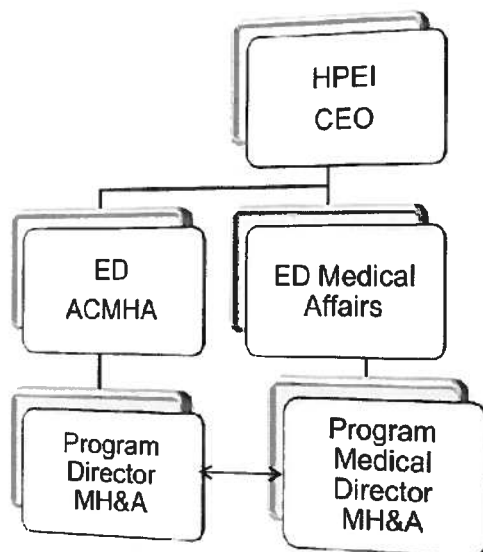
Fiscal Year 2014-2015

Avg Wait Time days for CMH Psychiatry (Adult)	Urg=75.3 Semi=58.7
Avg Wait Time days for CMH Psychiatry (Youth)	Urg=50.4 Semi=94.4
Avg Wait Time days by Triage for CMH Services Adult Clients	Urg=15.6 Semi=40.0
Avg Wait Time by Triage for CMH Services Youth Clients	Urg= 25.2 Semi=67.8

**Health PEI**

One Island Health System

# MH&A Program Structure



Within the current structure, the Program Director and Program Medical Director work to a co-direct management of MH&A Services provincially



## Highlights of Health PEI Initiatives

- Increased integration and collaboration
- Expansion of collaborative mental health
- Seniors mental health resource team expansion
- Continued expansion of evidence based programs, training and interventions
- Work with CMH and PH re: mothers and their babies at risk of mental health and substance abuse harms

**Health PEI**

**One Island Health System**

## Highlights of Health PEI Initiatives

- Re-launch of Island Helpline with CMHA
- Continued improvement of Transition Unit
- Standardization and increased programming in Addiction Extended Care Homes
- Pilot of 'Strongest Families'

**Health PEI**

**One Island Health System**

## Progress on Recommendations from CMHAO

- Expanded Strength, Youth Addiction Program
- Behavior Support Team
- Youth Day Treatment
- Enhanced inpatient services and supports

**Health PEI**

**One Island Health System**

Questions?

Health PEI

One Island Health System